

## UNINTERRUPTIBLE POWER SYSTEMS



# RemotEye® II

## XT

**Reliability in motion®**



- Provides Management of UPS through Web Browser
- Provides Management of UPS through SNMPv1 & SNMPv3
- Supports Flash-Upgrade through Network
- Provides Shutdown of Remote Client on LAN
- Provides Versatile Power Management Control
- Provides Email Notification of UPS Status & UPS Events
- Provides Remote Control of UPS through Internet

# TOSHIBA RemotEye II Web/SNMP Network Adapter

## Versatile Power Management

RemotEye II is your complete Toshiba UPS management solution. RemotEye II is a tool designed to control and monitor your Toshiba UPS remotely via the Simple Network Management Protocol (SNMP) and Hypertext Transfer Protocol (HTTP/web browser) methods. In addition, when a power outage occurs, a notification can be automatically sent to a network administrator or maintenance personnel. Should a prolonged power outage occur, RemotEye II can initiate an orderly shutdown to connected servers to minimize any risk of data loss.

## SNMP Ability

The RemotEye II, supports SNMPv1 and SNMPv3, and provides an SNMP interface for Toshiba UPS. This allows easy integration of UPS management into an existing SNMP network management system. At any given time, SNMP queries can poll the RemotEye II for the current status of the connected UPS.

## HTTP Familiarity

The RemotEye II provides an HTTP interface for a UPS. This allows for easy access of UPS information from any machine with a web browser. Any network workstation or management station can open the RemotEye II website to allow UPS information to be configured and monitored. RemotEye II also provides access to three java applets for monitoring, event login, and trend analysis. The RemotEye II also supports secure socket layer (SSL) for web security.

## Shutdown Capability

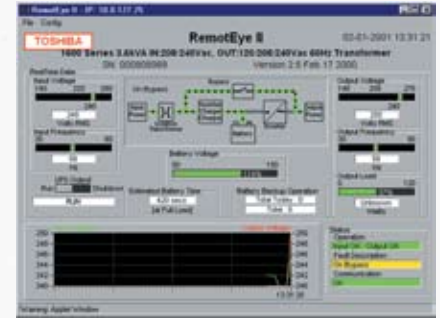
The RemotEye II also includes application software. This allows the RemotEye II to notify and shutdown important network servers. Through the existing network connections, RemotEye II can handle your unattended server shutdown needs.

## E-mail Notification

The RemotEye II can also provide email notification of UPS status and events to designated email recipients. Through the RemotEye II website, a notification can be emailed with an events log, status report, or both attached. The daily status report provides the UPS's condition over the last 24 hours. This option can be programmed to be sent out at a specific time of day.

## Option - Environmental Monitoring Device (EMD)

Temperature and humidity sensors provide complete environmental monitoring. This EMD device also provides two sets of user-defined dry contacts for monitoring. The EMD part number is RMTI-EMD-HT.



The monitor applet offers real-time analysis of UPS operation.



RemotEye II's web interface allows a user to view the protected machines RemotEye II oversees.

	RemotEye II/Internal Hardware	RemotEye II/External Hardware
<b>Model Numbers</b>	RMTI-INT-R4	RMTI-EXT-R4
<b>Package Content</b>	UPS Power Provided, 6-Foot Configuration Cable, User Manual, MIB Files, & Program Files	120 VAC Adapter, 5-Foot Cord, 6-Foot Configuration Cable, 6-Foot Communication Cable, User Manual, MIB Files, & Program Files
<b>Network Port</b>	10/100 Base T RJ-45 Phone Jack Connector	
<b>Serial Port</b>	One Asynchronous Serial Port	Two Asynchronous Serial Ports
<b>Network Protocol</b>	SNMP Over UDP/IP : HTTP Over TCP/IP : ARP, RARP, TFTP, & ICMP	
<b>Network Security</b>	SNMPv3, SSL, & SSH	
<b>Supported MIB</b>	MIB_II : Toshiba v1.2_MIB : JEMA MIB : RFC 1628	
<b>Operating Temperature</b>	0° to 40°C	
<b>Operating Humidity</b>	10 to 80%	
<b>Power Input</b>	8 to 12 VDC Unregulated	12 VDC Unregulated
<b>Power Consumption</b>	1.5 Watts Maximum	2.0 Watts Maximum
<b>Size</b>	130 mm (5.12") x 60 mm (2.36") (L x W)	134 mm (5.28") x 86 mm (3.40") x 27 mm (1.10") (L x W x H)
<b>Weight</b>	80 gm (0.2 lbs)	170 gm (0.38 lbs)
<b>Regulatory</b>	RoHS FCC Class A : CE Class A	RoHS FCC Class A, UL, CUL, CE
<b>Capability</b>	Supports Toshiba 1000, 1600EP, 1700, & 1800	Supports All Current Toshiba Uninterruptible Power Systems
<b>Warranty</b>	Two Years	

**UPS ADJUSTABLE SPEED DRIVES MOTORS CONTROLS INSTRUMENTATION PLC**

# TOSHIBA

Available Through:

**TOSHIBA INTERNATIONAL CORPORATION**

**INDUSTRIAL DIVISION**

13131 West Little York Road, Houston, Texas 77041

Tel (713)466-0277 Fax (713)892-5212

US (800)231-1412 Canada (800)872-2192 Mexico 01(800)527-1204

www.toshiba.com/ind

Copyright 03/2009

